



Embassy Cambridge

Age range: 12 -17 (residential), 13-17 (homestay)

Dates: 28 June to 9 August

Cambridge is world famous for its historic colleges, beautiful architecture and punting on the river Cam.

Our centre is located on Manor House campus of Bellerbys College, only 20 minutes from the town centre of Cambridge. We offer residential accommodation at Manor House and at the beautiful Jesus College in central Cambridge. We also offer the opportunity to stay in a local homestay.

Homestay Accommodation

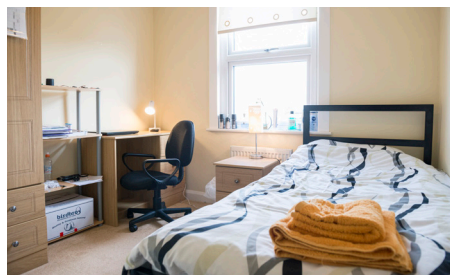
- Students are housed in pairs, with local host families
- Homestay students travel independently via public transport to Manor House
- Travel time to campus can be up to 40 minutes. A weekly bus pass is provided as part of the program and taxis at evenings/weekends.

Residential accommodation

- Standard single rooms with a shared bathroom ratio of 1:4 students at Manor House
- Standard single or twin rooms with a shared bathroom ratio of 1:4-1:16 students at Jesus College
- Bedroom furniture includes a wardrobe, desk and chair
- Bedrooms cleaned weekly
- Laundry service available
- Meals are served in a large canteen in Manor House
- Large common room and movie lounge
- Student access to sports field and sports hall
- Wi-Fi throughout

Language programme

- Lessons are taught by friendly and professional English teachers
- 20 x 45 minute lessons per week morning, or afternoon
- Placement test on day 1 to ensure students are in a class of the appropriate level
- Maximum 15 students per class
- Students will be placed in an international class with students of different nationalities
- Curriculum with emphasis on communication skills
- Many classrooms have interactive whiteboards
- Materials included as well as an end of course report and certificate
- Trinity exams preparation available
- Classrooms are located at Manor House



embassysummer.com



Campus facilities

Accommodation - Manor House

The residential accommodation on campus at Manor House has a cosy community feel, great sports facilities and a lot of green space.

Students stay in standard single rooms with a shared bathroom, ratio of 1:4 students. Each room contains a single bed, wardrobe, desk and chair. Wash basin in each room. Rooms are grouped in flats of 4. with Wi-Fi available throughout.

Deposit required upon arrival: £30
Replacement of lost room key: £45

Accommodation - Jesus College

Dates available: 5 July – 9 August

Jesus College is part of prestigious University of Cambridge located a short walk from the city centre (approximately 20 minutes). Students travel independently to Manor Campus for lessons etc. Students stay in standard single or twin rooms across 8 different town houses with one house parent in each. Wi-Fi available throughout.

Common areas

- There is a large common room on campus
- Wi-Fi is available

Cleaning

- Rooms are cleaned weekly
- Common areas are cleaned daily

Homestay

- Only twin rooms available in a homestay.
- Students will be sharing the bathroom with the host family.
- Students will be helped with transport to and from the campus for the first day of their stay.
- Students will receive a bus pass as part of their homestay package, should the distance necessitate. This will be decided by the Centre Management staff.

- Student bathrooms are cleaned each week day

Laundry

- Washing machines located at Manor House and Jesus College.
- Laundry is free of charge.

Meals

Meals are served in large dining hall on Manor House campus.

Food options

Breakfast

Full English breakfast available Monday-Friday and buffet style continental breakfast on weekends.

Lunch

Two courses, 3 options including a vegetarian and halal option.

Packed lunches (provided at weekends):

Water, fruit, sandwich, crisps and biscuits/cake.

Evening meal

Two courses, 3 options including a vegetarian and halal option.

Snacks

Vending machines are available for drinks and confectionary.

Sports

Access to sports field, astro turf pitch and a multi-purpose sports hall.

Programme information

Arrival

Students will be welcomed at campus reception where they will register, check in to their rooms and get their room keys.

Welcome

On the first evening, there will be a welcome activity which is designed to ensure students have the opportunity to meet the staff and the other students. They will get to know more about the campus, its facilities and other useful information which will help them during their stay.

Activities

Activities are organised inbetween lessons and during the evenings. These activities could be on-site and near to the centre. These may include:

- **Sports** such as football, mini Olympics, rounders, table tennis, volleyball or basketball.
- **Daytime activities** such as scavenger hunts and drama workshops.
- **Evening activities** such as karaoke, talent show, and team games.

Half-day trips

Our students only go on local visits to Cambridge to explore the charming city on a walking tour or a city quiz.

Full-day excursions

Full-day excursions from Cambridge include 3 trips per week to explore the following:

London: Visit London several times, seeing places such as: the British Museum, the Science Museum, the Natural History Museum, the National Gallery, Oxford street shopping and Hyde Park

Warwick Castle: Explore this spectacular medieval royal castle once owned by Queen Elizabeth I.

Oxford: Students can get to know the other famous university city and visit one of its most famous colleges

Stratford Upon Avon: Visit this beautiful town, the birthplace of Shakespeare

Ely Cathedral: This city features a beautiful Anglican cathedral and also includes a visit to Cambridge Botanical Gardens

Additional Cambridge: On full-day excursions students get to spend the day punting on River Cam, visit the Duxford IWM museum, visit Kings's College and Granchester Meadows.

Optional excursions

Take advantage of the additional trips that are available from Cambridge:

Thorpe Park: Enjoy extreme rides and attractions at this popular theme park.

Norwich: Visit this beautiful city in Norfolk and its beautiful cathedral

Yarmouth Sea Life Centre: Get up close with over 1500 amazing marine creatures

Sample programmes

Full summer sample programme - Cambridge

Each 14 night stay will include 2 local visits by foot or local transport to Cambridge with activities and 6 full-day excursions to other sites such as London, Oxford and Warwick Castle. Students also do full-day excursions in Cambridge to explore King's College, try punting on River Cam, Duxford IWM and Granchester Meadows, among other places. Transport for trips may be by private coach or public transport.

Students may have lessons either in the morning or in the afternoon in week 1, alternating weekly after that.

This programme is for illustrative purposes only and is subject to amendments or alterations.

Cambridge Homestay

The Homestay programme has some differences to the below programme. On Sunday, Monday, Friday and Saturday evenings they spend time in their homestays instead of doing on-site activities.

Sample programme

Week 1/4	Sunday	Monday	Tuesday	Wednesday	Thursday	Friday	Saturday
	28 Jun/19 Jul	29 Jun/20 Jul	30 Jun/21 Jul	1 Jul/22 Jul	2 Jul/23 Jul	3 Jul/24 Jul	4 Jul/25 Jul
Morning	Arrivals /local activities or optional trip to Norwich	Walking Tour of Cambridge	Full day trip to London with Westminster Walking Tour & Covent Garden	Lessons	Full day trip to Cambridge with Chauffered Punting & Duxford IWM	Lessons	Full day trip to Oxford, walking tour and a College visit
Afternoon		Testing /Induction or Lessons					
Evening	Welcome and Team Games	Capture the Flag	Kahoot Quiz Night Culture Club	Embassy X-Factor Karaoke	Big Game Bingo Photo Scavenger Hunt	Photo Scavenger Hunt	Film Night

Week 2/5	Sunday	Monday	Tuesday	Wednesday	Thursday	Friday	Saturday
	5 Jul/26 Jul	6 Jul/27 Jul	7 Jul/28 Jul	8 Jul/29 Jul	9 Jul/30 Jul	10 Jul/31 Jul	11 Jul/1 Aug
Morning	Arrivals /local activities or optional trip to Great Yarmouth Sea Life Centre	Testing /Induction or Lessons	Lessons	Full day trip to London with British Museum and Oxford Street Shopping	Lessons	Full day trip to Cambridge Kings College & Granchester Meadows	Full-day trip to Warwick Castle
Afternoon		Cambridge City Quiz					
Evening	Welcome and Speed Dating	Capture the Flag	Kahoot Quiz Night Culture Club	Embassy X-Factor Karaoke	Big Game Bingo Photo Scavenger Hunt	Photo Scavenger Hunt	Film Night

Week 3/6	Sunday	Monday	Tuesday	Wednesday	Thursday	Friday	Saturday
	12 Jul/2 Aug	13 Jul/3 Aug	14 Jul/4 Aug	15 Jul/5 Aug	16 Jul/6 Aug	17 Jul/7 Aug	18 Jul/8 Aug
Morning	Arrivals /local activities or optional trip to Thorpe Park	Walking Tour of Cambridge	Full day trip to London with Science/Natural History Museum & Hyde Park	Lessons	Full day trip to Ely Cathedral & Cambridge Botanical Gardens	Lessons	Full day trip to Stratford upon Avon & Shakespeare's Birthplace
Afternoon		Testing /Induction or Lessons					
Evening	Welcome and Lip Sync Battles	Beat the Staff!	Fashion Show Culture Club	Embassy Idol Karaoke	Dragon's Den Preparation Dragon's Den Presentation	Scavenger Hunt	Film Night

Final Departures and Final Sunday 9 August

Student Welfare

We place the highest priority on care and supervision at all of our Embassy Summer centres, so you can rest assured students are well looked after. Members of staff are available 24 hours a day.

Office address

Embassy Summer Schools
Manor Campus
Arbury Road
Cambridge CB4 2JF

Student services

Our student support staff can help you with:

- Accommodation
- Airport transfers
- Information about local services
- Assistance with individual and personal problems
- Emergency contact

Medical information

If a student needs medical attention, an Embassy staff member will help them to make an appointment. Group leaders must accompany the student to an appointment. An Embassy staff member will accompany any student that is not part of a group.

Local hospital

Cambridge University Hospitals
Hills Road
Cambridge

Tel: +44 1223 245151

Local doctor

Arbury Surgery
114 Arbury Rd
Cambridge

Tel: +44 1223 364433

Local dentist

Cavendish House Dental Care
183 Arbury Rd
Cambridge

Tel: +44 1223 467000

Insurance

If a student does not have insurance, guard. me insurance is available to purchase through Embassy Summer.

Safe

A safe will be available for the storage of passports, travel documents and deposits.

In case of emergency

A 24-hour emergency telephone number is available throughout the summer.

Tel: +44 7771 845978.

